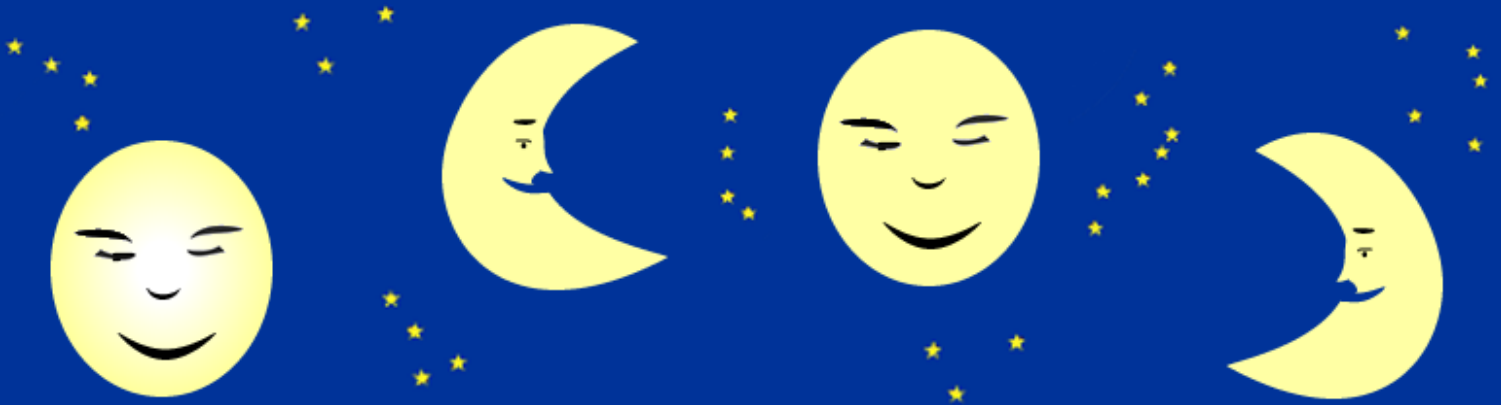


People everywhere are

Planting By The Moon

BY LIRVA



About Planting by the Moon

(This does not involve digging holes in the moonlight!)

This year we will again be issuing a guide to gardening by phases of the moon. This ancient custom is not completely understood, but it is well known that our forefathers relied heavily on the lunar calendar for the planting and harvesting of crops. Indeed, many monolithic structures of stone circles, especially in parts of Britain and Europe, were constructed to accurately forecast the seasons, equinox and lunar phases. It is thought the timekeepers of these ancient sites would advise the local farmers of what to plant and when.

The lunar month starts with the New Moon and waxes to Full Moon then wanes until the next New Moon.

‘Leafy annuals’ are plants grown for their edible foliage – herbs (eg parsley, mint) and greens (eg broccoli, cabbage).

‘Fruiting annuals’ are plants grown for their edible (or useful) fruiting bodies – eg tomatoes, loofahs, sunflowers.

‘Root crops’ are (you guessed!) plants grown for their edible roots – herbs (eg turmeric, ginger) and vegetables (eg carrots, radish).